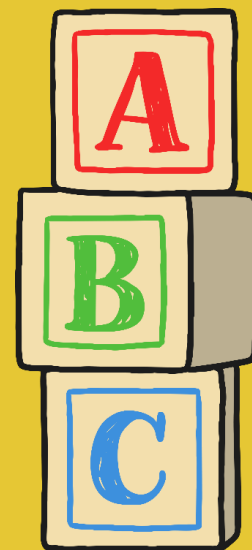




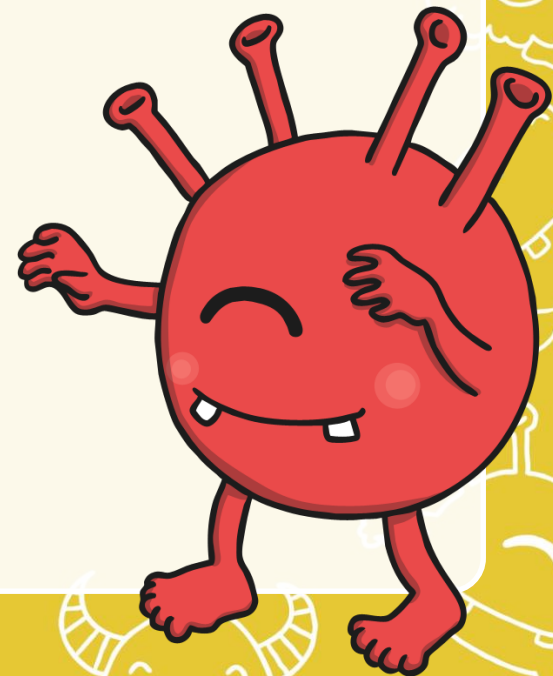
Year One

Phonics Screening Check

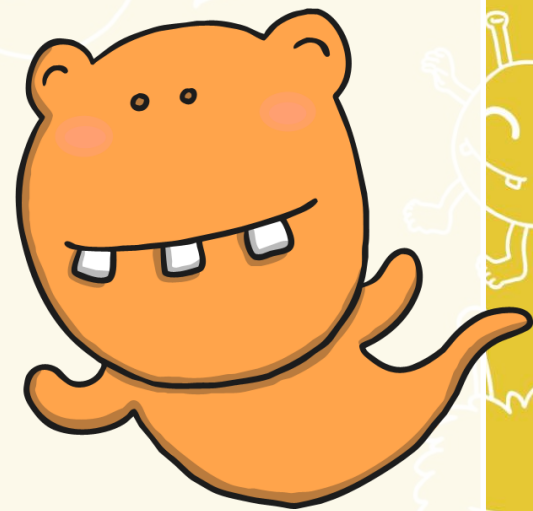
Children's Materials



fip



pon



hab





u b

dack

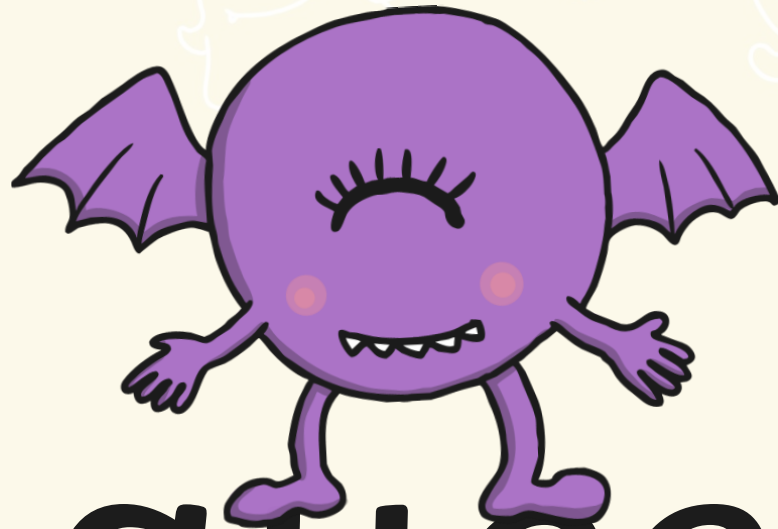


chob



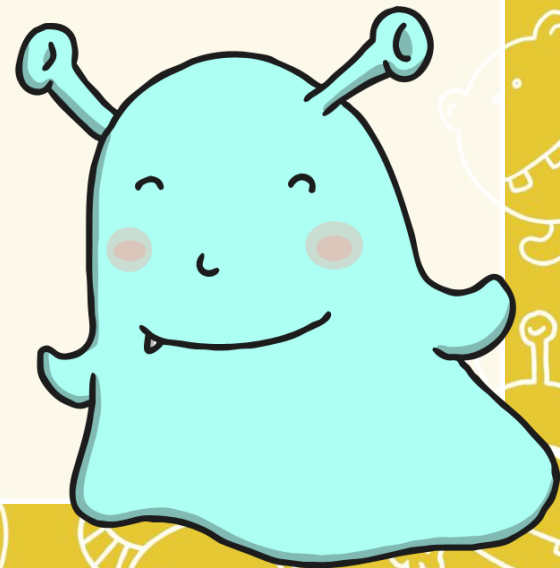
nurt





quiet

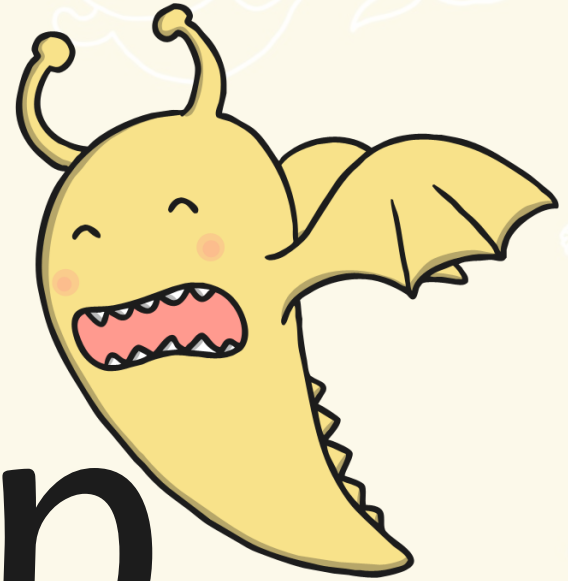
plap



froin



melp



heent





shed



long



soil



chart



crab



fresh

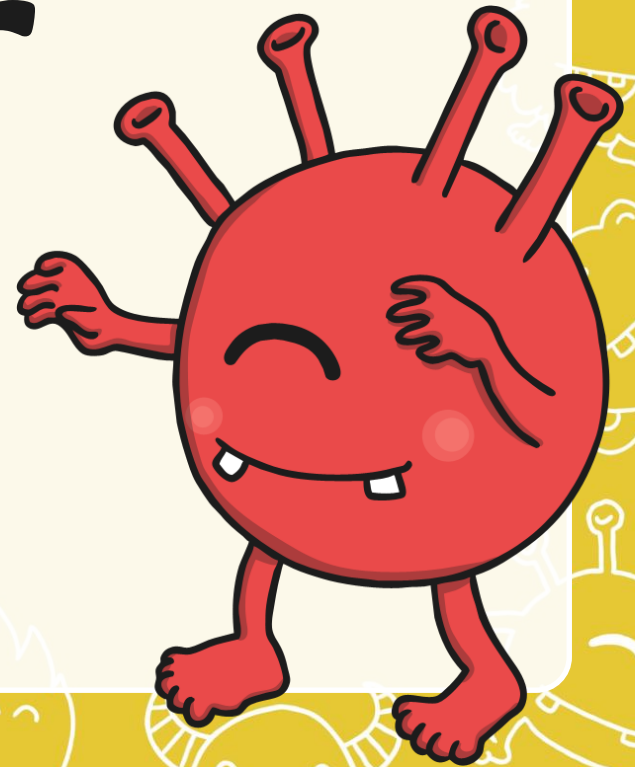


wink

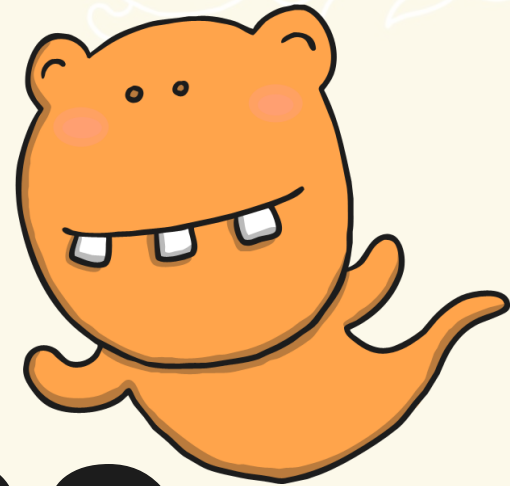


shuts

yair



blies



keam



whape



braft



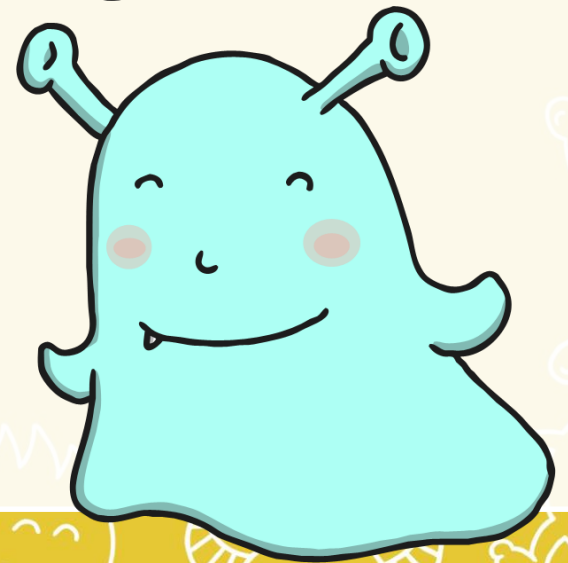
thrant





sprop

strow





law



glued



zoom



rice



grand



cloaks



scrap

The background is a vibrant yellow color. It is framed by a white border that contains several cartoonish, white-outlined drawings of various creatures and monsters. These include a bat-like creature with wings, a ghost-like figure, a creature with a large mouth and sharp teeth, a creature with a crown, a creature with a large head and small body, and a creature with a large, spiky head. The word "strike" is written in a large, black, lowercase, sans-serif font in the center of the white rectangular area.


strike



river



diving



beehive



midnight

